



## Stewardship: Sharing our gifts for God's work

By Sister Amelia Stenger, OSU

**E**tienne De Grellet gave us a beautiful creed to live by when she said, "I expect to pass this way but once; any good therefore that I can show to any fellow creature, let me do it now. Let me not defer or neglect it, for I shall not pass this way again." This is the essence of stewardship.

Stewardship is a way of life for us. It is Jesus' call to us to share God's grace. It is not marginal to the Gospel, rather it is in the Bible where we hear what Jesus tells us about God and about how we are to share our gifts with others.

Kenneth Boa, in his book *Conformed to His Image*, adds to this definition. He says, "We own nothing that was not first given to us... (1 Cor. 4:7). God has entrusted us with aptitudes and abilities, and as good stewards, we must use them for His glory and not our own. This is true not only of musical, artistic, athletic, academic, business, and persuasive talents, but also of the spiritual gifts we have received."

For years we have heard about stewardship in relationship to our gift to the Church. Most of the time we think of financial support when we hear the word. There are other areas that also must be stewarded. These include our talents, the environment, our fellow man, institutions, and finances. How are we sharing our gifts in each of these areas?

Dr. Amanda Witt, author of *Effective Stewardship*, tells us that we think that some



*Sister Amelia Stenger, center, and Mount Saint Joseph employee Mike Stelmach, right, help students from Christ the King School in Madisonville, Ky., to plant seeds in a garden at Maple Mount.*

people are creative and some are not. However, in Genesis 1:27, when we're told that God made man and woman in God's image, what do we know about God? She says, "All we know about God is that God creates good things. If we are made in God's image, then each of us has been made to create—not to make things out of nothing as God can, but to transform in good ways the portion of the world that we inhabit."

We use our gifts to make a difference. We use our creativity in our homes, our workplaces, and our churches. We use our resources to help those who may not have what we have. We use our knowledge of business to help others learn how to take care of theirs.

In today's world, one of the major areas of

*Continued on page 3*

### OUR MISSION

Mount Saint Joseph Conference and Retreat Center offers and hosts programs in a rural environment of tranquility for people of all ages and faiths to nurture spiritual and personal growth, advance the arts, and promote lifelong learning.

## Dear Friends of the Center,

The Jan. 27 ice storm brought a great deal of destruction to the beautiful trees and shrubs around the Center. The Center was without electricity for six days during which time all the water systems were taken down to prevent the pipes from freezing. Without heat and water we had to cancel several programs and workshops.

As we look back over those days, we thank God for the many people who worked together to restore electricity and remove broken trees and branches. People came together to help us and our neighbors. We are so grateful for that help.

We continue to see many trees with broken branches, yet each day of spring brings new life to the trees. This rebirth is a sign of hope for us. The brokenness is still there, but life goes on and healing occurs.

Isn't that the way life is? We have hurts, illnesses, loss of loved ones...and God gives us the strength, hope, and love we need to continue God's work.

Here at the Center we are looking at the new fiscal year that begins in July and trying to adjust budgets and job descriptions in order to continue to add new programs. Your past donations have been a wonderful gift to our ministry. Your continued support is needed to fulfill the ministry of service to God's people. We always include an envelope with this newsletter and many people return it with a gift. Thank you and God bless you for all you do.

### CONFERENCE AND RETREAT CENTER BOARD OF DIRECTORS

Mr. Jerry Birge, OSUA  
Mrs. Margaret Birge, OSUA  
Mr. Tom Clinton  
Ms. Sandra Elder  
Sister George Mary Hagan, OSU  
Mrs. Paula Hayden  
Sister Mary Henning, OSU  
Sister Annalita Lancaster, OSU  
Mr. John Little, OSUA  
Mrs. Martha Little, OSUA  
Mrs. Bonnie Marks, OSUA  
Mr. Scott McCain  
Sister Michele Morek, OSU  
Sister Rose Marita O'Bryan, OSU  
Mr. Pat Osborne  
Mrs. Tish Correa-Osborne  
Sister Carol Shively, OSU

*OSUA designates an Ursuline Associate*



*Sister Amelia Stenger, right, speaks to graduate students from the environmental education classes of Brescia University during an evening class held at Mount Saint Joseph Conference and Retreat Center March 9.*

### Next spinning day is Saturday, Aug. 8

Sessions begin at 10 a.m.  
Lunch available for \$10. Let's "spin,  
knit, and talk until we're done!"  
Call 270-229-0200 ext. 413  
to register.



You give us hope.

Happy Spring.

*Sr. Amelia Stenger, OSU*

Sister Amelia Stenger, OSU  
Executive Director

The Center News is published three times a year by  
Mount Saint Joseph Conference and Retreat Center  
8001 Cummings Road • Maple Mount, KY 42356-9999  
Phone: (270) 229-0200 • Fax: (270) 229-0279  
E-mail: [msjcenter@maplemount.org](mailto:msjcenter@maplemount.org) • Web: [www.msjcenter.org](http://www.msjcenter.org)  
DIRECTOR OF MISSION ADVANCEMENT AND COMMUNICATIONS: Dan Heckel  
COMMUNICATIONS SPECIALIST/GRAPHIC DESIGN: Jennifer Kaminski  
Mount Saint Joseph Conference and Retreat Center is a sponsored ministry  
of the Ursuline Sisters of Mount Saint Joseph in Maple Mount, Kentucky

**39th Annual Mount Saint Joseph BBQ Picnic  
Sunday, Sept. 13 • Serving begins 11:30 a.m.  
Booths • Games • Silent Auction • Fun for all!**

# New summer camps for ages 10-12

## Discover Music, Nature & Maple Mount June 8-13

Children ages 10-12 will study music and explore nature at the June 8-13 Discover Music, Discover Nature, Discover Maple Mount camp at the Center.

Children will learn about music native to Kentucky, take elective classes, go on nature walks, and listen to nightly performances by musicians leading the camp.

The week concludes with a free public concert featuring Appalachian folk musician Carla Gover, local musician Heath Eric, and the campers in the outdoor valley at Maple Mount on Saturday evening, June 13.

A typical day will start with breakfast at 8 a.m., then a core curriculum class, lunch, a gathering of all campers, elective class, snack, a nature session, supper, and a performance by one of the artist presenters at 7 p.m.

Elective classes include Cherokee dance, Appalachian clogging (a Kentucky dance tradition), scrapbook/journal making, group song writing, shrinky-dink jewelry, basic shelter building, fire making with a bow drill, finding and preparing drinkable water, fiddle music, mandolins, recording songs on your computer, edible plants, how to make a rope, tree identification, constructing a fish basket and a hand drum, and Native America traditions and lore.

**The first 50 campers who register can attend for just \$100.** The cost for commuters is also \$100. For camp details, visit [www.discovermaplemount.org](http://www.discovermaplemount.org) or call 270-229-0200.

## Agri-Eco Camp June 14-19

From June 14-19, the Center will host Agri-Eco Camp 2009, also for children ages 10-12. This is an immersion experience in nature to help campers learn where their food comes from and how they can be good stewards of Earth. Each day has its own theme:

- **Adventure Day:** Explore the land, do a scavenger hunt, go fishing, and interact with the Ursuline Sisters.
- **Farm Day:** Plant a garden, pick crops, make ice cream and butter, learn about bees, and climb aboard farm equipment.
- **Solar Day:** Learn about the power of nature with solar panels, a wind turbine, and a global positioning satellite display. At night, we will gaze at the stars!
- **Biology Day:** Test water and soil, use a microscope, see animals and snakes, and paint the things you see!

Early bird campers can attend for \$100 if registered by May 14. After May 14 the cost is \$200. Fees includes meals, materials and overnight lodging. Find more information at [www.msjcenter.org](http://www.msjcenter.org). To register, contact Kathy McCarty at 270-229-0200 or [kmccarty@maplemount.org](mailto:kmccarty@maplemount.org). Find a flyer at [www.msjcenter.org](http://www.msjcenter.org)

## Stewardship *From front page*

stewardship deals with the environment. Anyone watching TV, listening to the radio, going to the grocery, or visiting the hardware store will hear about ways to save energy and ultimately save God's Earth.

We are all called to care for God's creation. We are called most of all to care for our human family... many of them are poor. Each thing we do affects someone else. Jesus gave us the example to take care of our neighbor. *Love God above all things and love your neighbor as yourself.*

When we take care of Earth, we receive food, water, shelter, clothes, and all the resources we need to live. Looking at a beautiful sunset, listening to ocean waves or watching an eagle soar in the wind takes care of our soul. We know God loves us because he has given us so much beauty. Now is the time for all of us to become very serious about our stewardship of God's Earth. If we do not steward, who will?

*To learn more about retreats at the Center and to receive information about environmental workshops, summer camps and other educational programs go to [www.msjcenter.org](http://www.msjcenter.org) or call Kathy McCarty at (270)229-0200 ext. 413. ■*

.....

**MARIAN RETREAT**

**OCT. 9-11, 2009**

**THEME: "THE ROSARY"**

**RETREAT DIRECTOR:**  
**MSGR. BERNARD POWERS**



Pope John Paul II looked at the individual, the family and the world. In the light of the issues he saw, he handed us an Apostolic Letter on the Rosary. Here we find wisdom, courage, and strength to deal with these issues in our life. Msgr. Bernard Powers will lead us through this prayerful weekend.

Fee: \$175 includes retreat, meals, accommodations.  
Commuter: \$120 includes retreat and meals.  
Take 10% off total if paid by Sept. 9.

**Contact Kathy McCarty: 270-229-0200 ext. 413**  
**[kmccarty@maplemount.org](mailto:kmccarty@maplemount.org)**

.....

# Scenes from the Center...



Mount Saint Joseph Conference and Retreat Center was closed from Jan. 26 to Feb. 2 because of a major ice storm. The ice caused widespread power outages and left behind countless broken branches.



LEFT: Seminarian directors spent a week at the Center March 3. The "Towards Jesus" retreat is always held before Holy Week. A seminarian, playing during a retreat retreat.



Tim Darst, regional representative for Kentucky Interfaith Power and Light, speaks at the April 23 "Save Money, Save Energy, Save God's Earth" workshop for churches.



Members of the RCIA class of Our Lady of Lourdes Parish, Owensboro, Ky., talk in front of the Gift Shop March 22.



Methodist pastors and their spouses from the local region came together to pray, celebrate and praise God March 25 at the Center.



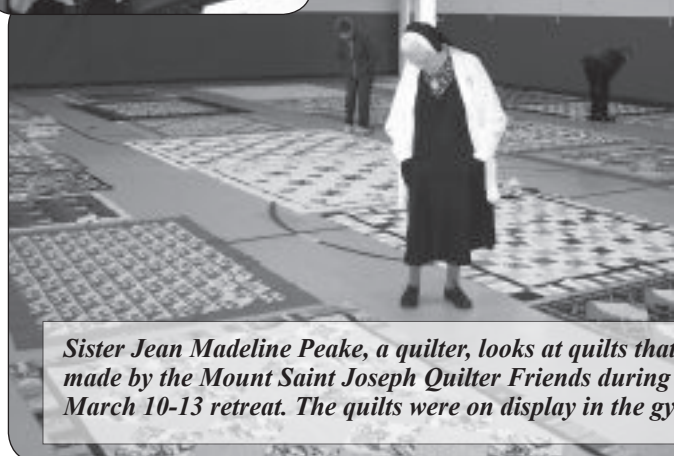
Abigail Brown gives a hug to Sister Rosaria Ray during her March 21 visit to the Villa at Maple Mount. Abigail, 4, is the great-niece of Sister Amelia Stenger.



QUILTS: Far left: Barbara Moss with the Paducah Quilt Guild, smiles as she does embroidery at the group's March 24-27 retreat. Left: Center staff member Jennifer Byrd tries to stay warm in her office during a winter power outage at the Center.



Left: Women gather for the April 3-5 Christian Women's Retreat. A theme was, "Recovery from Hurts, Habits, and Hang-ups."



Sister Jean Madeline Peake, a quilter, looks at quilts that were made by the Mount Saint Joseph Quilter Friends during their March 10-13 retreat. The quilts were on display in the gymnasium.



ns and their week's retreat which 27 to April Jerusalem" held the week . ABOVE: Jerry, yed the piano reception.



The Jan. 9-11 Grayson County Ursuline Associates retreat included, left to right, Jean Gutierrez, Sister Mary Louise Knott, Brenda Semar, Teen Robinette, Catherine Gawarecki, Carol Hill, and Violet Hamilton.



Fr. Joe Mills celebrates Mass in the Center chapel during the Grayson County Women's Retreat in January.



l seven-county e God Jan. 24-



Participants enjoy a discussion at the Feb. 27-March 1 "Women in the Bible" Women's Retreat, led by Sister Cheryl Clemons, third from left.



Left: Spinners, knitters, and crocheters gather for the Feb. 7 quarterly spinning day at the Center.

Below: Msgr. Bernard Powers leads a prayer day on Feb. 28. Msgr. Powers will also be leading the Oct. 9-11, 2009 Marian Retreat. This year's theme is the rosary.



A local Retrouvaille group met at the Center Jan. 16-18.



t were their m.



Participants in the RCIA group from Precious Blood Church, Owensboro, Ky., visited the Memorial Garden located on the grounds near the Retreat Center during their March 8 retreat. The rosary walk can be seen winding along the top of the photo.

## MOUNT SAINT JOSEPH CONFERENCE AND RETREAT CENTER IN MAPLE MOUNT, KENTUCKY

# CALENDAR OF EVENTS MAY - NOVEMBER 2009

**May 2009**

- 16-17 MSJ Academy and Junior College  
Alumnae Reunion Weekend  
28 GRADD Workshop

**June 2009**

- 6-8 Circle of Friends  
8-13 **Discover Music Discover  
Nature, Discover Maple Mount  
for children ages 10-12**  
14-19 **Agri-Eco Camp for children  
ages 10-12**  
19-21 Bruner Family Reunion  
21-26 Christian Leadership Institute  
22-25 GRCC/ 4 day workshop  
26-28 Associates Retreat Weekend  
29-30 DCHS-Panther Leadership

**July 2009**

- 8-10 Ursuline Sisters Community Days

*Center-sponsored programs are **bold**.  
To register or schedule an event, contact  
Kathy McCarty 270-229-0200, ext. 413  
E-mail [kmccarty@maplemount.org](mailto:kmccarty@maplemount.org)*

*Looking for the right location for your retreat, reunion, or other social or business gathering? Please consider Mount Saint Joseph Conference and Retreat Center.*

- 11-17 St. John's Youth (Michigan) Habitat  
for Owensboro  
12-18 Conference and Directed Retreat  
19-26 **Centering Prayer Retreat**  
25 **GREENING Western Kentucky  
Expo at Brescia University**  
27-31 **Spiritual Direction Institute  
Week 4**  
31 Scrapbook Swarm

**August 2009**

- 7-9 Catholic Engaged Encounter  
8 **Yarn Spinners**  
14-16 Retrouvaille  
20-23 **Spiritual Directors Retreat**



- 21-23 Yoga & Meditation Retreat  
22 DRE & Youth Ministers  
28-29 Scrapbooking

**September 2009**

- 13 MSJ Annual Picnic  
14-18 Glenmary Retreat Week  
18-19 Leadership McLean County  
22-25 Runaway Quilters  
28-30 Home Missions Leadership

**October 2009**

- 2-4 T.O.P.S. Retreat  
3 Wedding Reception  
9-10 Grace Fellowship  
9-11 **Marian Retreat**  
12-16 **Spiritual Directors Institute  
Week 5**  
16-18 Mount Hope Weekend  
23-24 Catholic Engaged Encounter  
26-30 Priests Retreat Weekend  
30-1 Regional Cursillo Encounter

**November 2009**

- 7-8 Academy for Young Leaders  
13-15 **Thomas Merton Retreat**  
14 **Yarn Spinners**

**Visit the Retreat Center online! [www.msjcenter.org](http://www.msjcenter.org)**

## Summer Retreats for Women Religious

**"Journey of Faith" JULY 12-18**

**Retreat Director: Fr. Wil Steinbacher**

Retreat includes two daily conferences,  
Sacrament of Reconciliation, Eucharist, and  
Anointing of the Sick.

Participants in the **Directed Retreat** will meet each  
day with a spiritual guide: **Sister Mary Matthias  
Ward, OSU • Sister Helen O'Brien, OSU**

To register or for information, contact Kathy McCarty  
(270) 229-0200, ext. 413 • [kmccarty@maplemount.org](mailto:kmccarty@maplemount.org)

### Center Wish List

- 32 new bedspreads for rooms in St. Ann--\$69 each
- New carpet in hallway of St. Ann--\$3,000
- Replace air conditioning unit--\$3,459

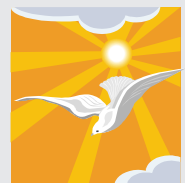
*Your support with any of the items on our list would be appreciated!*

## *Partners in the Mission*

*Making your will* is the most important way you can ensure that the people and causes you care about are the beneficiaries of your assets. We hope you will consider designating Mount Saint Joseph Conference and Retreat Center as one of your beneficiaries. Your gift will help the Center continue its mission of service in spiritual and educational growth. All such deferred gifts to us are fully deductible for estate tax purposes.

*A memorial gift or bequest* offers two opportunities. First, it allows you to create a new gift or continue an important ministry through the work of the Mount Saint Joseph Center. Secondly, your bequest can honor a loved one with a permanent memorial. A memorial gift is the simplest gift you can make. It allows you to involve many family members in the charitable act and to leave a legacy that continues to work.

*We pray for you every day. Please pray for the work of the Center.*



# Weekend for spiritual directors Aug. 20-23

“Building Contemplative Community,” a weekend retreat for spiritual directors, is scheduled for Aug. 20-23, 2009 at Mount Saint Joseph Conference and Retreat Center. The retreat is directed toward anyone who currently ministers as a spiritual director as well as past or current participants in the Spiritual Direction Institute offered by the Center. All faith backgrounds are welcome.


The retreat will include professional sharing among colleagues; exploring Celtic meditations; right-brained



activities; personal reflection and contemplation, and a rhythm of community worship and sharing.

The facilitators will be spiritual directors Theresa O’Byran and Martha Little.

Registration begins at 6 p.m. Thursday, Aug. 20, and the retreat ends after lunch on Sunday, Aug. 23. The retreat fee is \$200. Participants can take 10% off the cost if fee is paid by July 20. To register, contact Kathy McCarty at 270-229-0200, ext. 413 or kmccarty@maplemount.org.



**Mark your calendars for the third annual...**

## GREENING Western Kentucky

Getting Renewable Energy Education Now

### GREENING Western Kentucky Expo

**Saturday, July 25, 2009 • Brescia University**

**Booths • Workshops • Giveaways**

Lunch available for purchase. For exhibit booths or other information, contact Sister Amelia Stenger: 270-229-0200, ext. 401 • astenger@maplemount.org

## Help complete the Rosary Walk

*Remember your loved ones with bricks or beads*


Yes, I/We want to support the mission of the Retreat Center and the effect the retreat ministry has on the lives of those who attend by contributing to the Memorial Rosary Walk. I/We want to support this ministry by contributing:

\$ 500 to sponsor a bead

\$ 125 to sponsor a brick

\$ \_\_\_\_\_ Other

If donating \$125 or more, please fill in the blocks with the name of the person or persons to be inscribed on the brick or bench. One letter, comma, period or space must go in each box (15 maximum per line up to 3 lines):

Name \_\_\_\_\_

Address \_\_\_\_\_

City \_\_\_\_\_

State \_\_\_\_\_ Zip \_\_\_\_\_

Phone \_\_\_\_\_ Email \_\_\_\_\_

Please make checks payable to: Mount Saint Joseph Center  
c/o Rosary Walk, 8001 Cummings Rd., Maple Mount, KY 42356-9999

Credit Card:    Visa    Mastercard

Card # \_\_\_\_\_

Expiration Date \_\_\_\_\_

Signature \_\_\_\_\_

Please mail this ad with your contribution to help complete the Memorial Rosary Walk. For further information about sponsorship opportunities, please contact Sister Amelia Stenger, OSU, at **(270) 229-0200, ext. 401** or e-mail astenger@maplemount.org



# Mount Saint Joseph

Conference and Retreat Center

8001 Cummings Road  
Maple Mount, Kentucky 42356-9999  
270-229-0200  
www.msjcenter.org

NON-PROFIT ORG.  
U.S. POSTAGE  
PAID  
OWENSBORO, KY  
42301  
PERMIT NO. 120

Please help us update our mailing list. If there are errors in your address, please inform us so that we may correct them. Call 270-229-0200.



## CENTERING PRAYER

EIGHT DAY INTENSIVE RETREAT OR POST-INTENSIVE RETREAT

July 19-26, 2009

**INTENSIVE RETREAT:** An in-depth retreat for those with experience in Centering Prayer and interested in entering into the more profound levels of spiritual practice in an atmosphere of silence, solitude, and community.

**POST-INTENSIVE RETREAT:** Provides an opportunity for intense Centering Prayer. (Intensive Retreat experience necessary)

Presenter Sister Mary Ann Flanagan, IHM, Ph.D., is a free-lance theological educator. She has been associated with Fr. Thomas Keating and Contemplative Outreach for 20 years and is a trained presenter and facilitator of Centering Prayer.

Presenter Sister Mary Otho Ballard, OP, is a Dominican from Saint Catherine, Ky., with an M.A. in religious education. She is the coordinator of Contemplative Outreach of Kentucky.



SISTER MARY OTHO  
BALLARD, OP



SISTER MARY ANN  
FLANAGAN, IHM

**RESIDENT: \$450 (INCLUDES ROOM, MEALS, PROGRAM, AND MATERIALS)**

**COMMUTER: \$275 (INCLUDES MEALS, PROGRAM, AND MATERIALS)**

**GET A 10% DISCOUNT IF PAID IN FULL BY JUNE 19**

To register, contact

Kathy McCarty

(270) 229-0200, ext. 413

kmccarty@maplemount.org

www.msjcenter.org